

QH-72A load cells are available in the capacities from 10t to 100t.

Stainless steel construction with Column type. Fully seal welding ,silicon adhesive sealed inside,waterproof, grease proofing,anti-corrosion and suitable for all kinds of environment.

Column type structure design.Tension and/or compression loading and easy installation.

Suitable for platform scale, steam inspection line, hopper scale and other electronic weighing devices.



### Features:

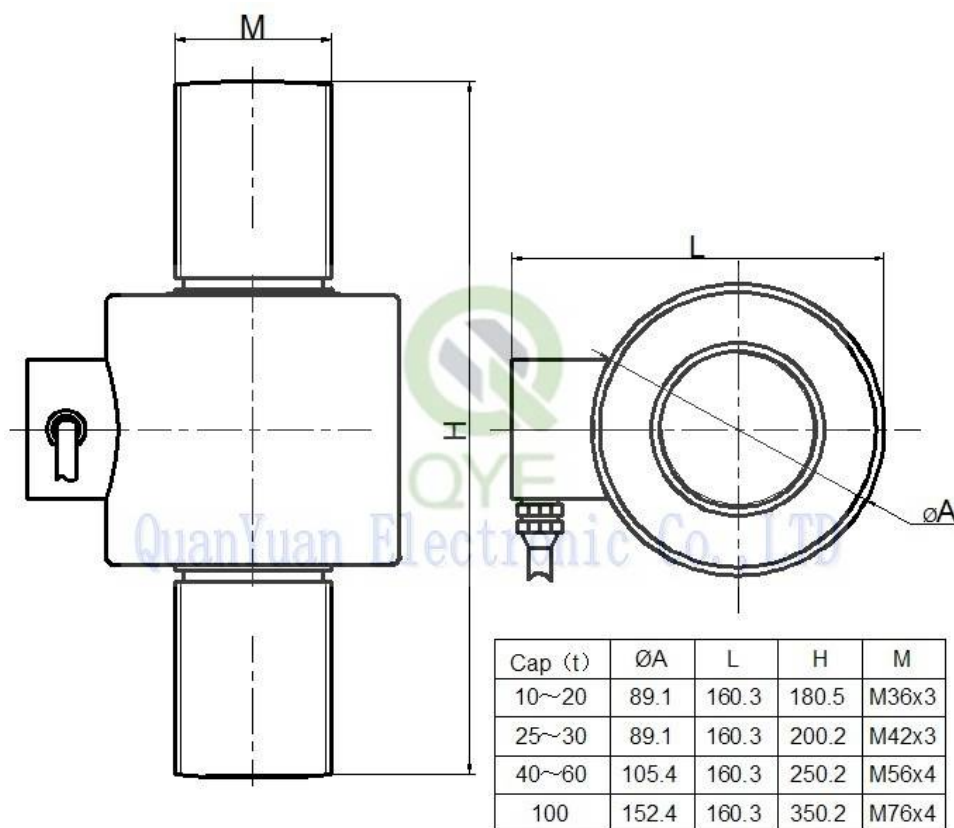
Capacity : 10t to 100t

IP grade: IP67 & IP68

High accuracy.reliable performance

Column type structure design ,easy installation.

### Electrical connection and Dimensions:



## Technical Specifications

Specifications:			
capacity	t	10, 20, 25, 30, 40, 50, 100	
safe overload	%FS	150	
ultimate overload	%FS	300	
rated output	mV/V	1.5 ± 0.002	
excitation voltage	Vdc	9 ~ 12	
combined error	%FS	± 0.05	±0.03
zero unbalance	%FS	± 1	
non-linearity	%FS	± 0.05	± 0.03
hysteresis	%FS	± 0.05	± 0.03
repeatability	%FS	± 0.03	± 0.02
creep	%FS/30min	± 0.03	± 0.02
input resistance	Ω	700 ± 10	
output resistance	Ω	700 ± 5	
insulation resistance	M Ω	≥ 5000 @ 50 Vdc	
operating temperature range	°C	-35 ~ +65	
compensated temperature range	°C	-10 ~ +40	
temperature coefficient of SPAN	%FS/10°C	± 0.03	± 0.02
temperature coefficient of ZERO	%FS/10°C	± 0.03	± 0.03

## Electrical connection:

Excitation+ red      Excitation- black      Signal+ green      Signal- white

Four-core shielded cable with polyethylene. Cable is not connected with elastomer.

Cable length: 10 m

Cable diameter: ∅5mm

The cable length could be chose by customer's application.

## QY Electronic Co Ltd

Address: No. 1032, Xinghan Road, Hantai District, Hanzhong, Shaanxi, China (Mainland)

Website: [www.qysensor.com](http://www.qysensor.com)

E-mail: [info@qysensor.com](mailto:info@qysensor.com)

TEL: +86-(0)916-2257989

Zip: 723000