

QL-12A load cells are available in the capacities from 50kg to 500kg.

Aluminum construction with parallel beam type.

Silicon adhesive sealed, surface anodized and anti-corrosion.

Integral structure and easy installation.

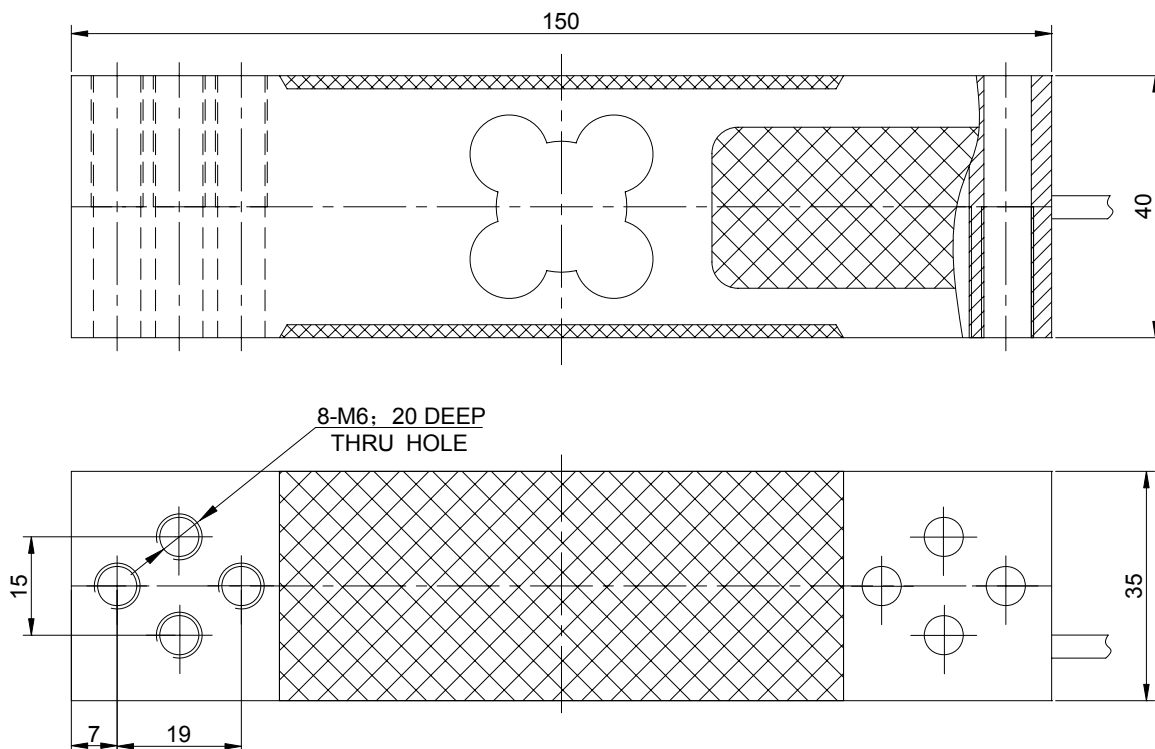
Suitable for electronic balance, electronic platform scale and other electronic weighing devices.



### Features:

1. Capacity : 50kg to 500kg
2. High accuracy.  
Aluminum parallel beam
3. Max. platform size:400x400mm
4. Integral installation
5. The cable length could be chose by customer's application.

### Electrical connection and Dimensions:



## QY Electronic Co Ltd

Address: No. 1032, Xinghan Road, Hantai District, Hanzhong, Shaanxi, China (Mainland)

Website: [www.qysensor.com](http://www.qysensor.com)

TEL: +86-0916-2257989

E-mail: [info@qysensor.com](mailto:info@qysensor.com)

Zip: 723000

## Technical Specifications

<b>Specifications:</b>		
capacity	kg	50,60,80,100,150,200,500
safe overload	%FS	120
ultimate overload	%FS	150
rated output	mV/V	2.0 ± 0.2
excitation voltage	Vdc	9 ~ 12
combined error	%FS	± 0.03
zero unbalance	%FS	± 1.5
non-linearity	%FS	± 0.02
hysteresis	%FS	± 0.02
repeatability	%FS	± 0.02
creep	%FS/30min	± 0.02
input resistance	Ω	406 ± 10
output resistance	Ω	350 ± 3
insulation resistance	M Ω	≥ 5000 @ 50 Vdc
operating temperature range	°C	-20 ~ +60
compensated temperature range	°C	-10 ~ +40
temperature coefficient of SPAN	%FS/10°C	± 0.02
temperature coefficient of ZERO	%FS/10°C	± 0.03

## Electrical connection:

Excitation+ red    Excitation- black    Signal+ green    Signal- white

Four-core shielded cable with polyethylene. Cable is not connected with elastomer.

Cable length: 1.5 m

Cable diameter : 5 mm

The cable length could be chose by customer's application.