

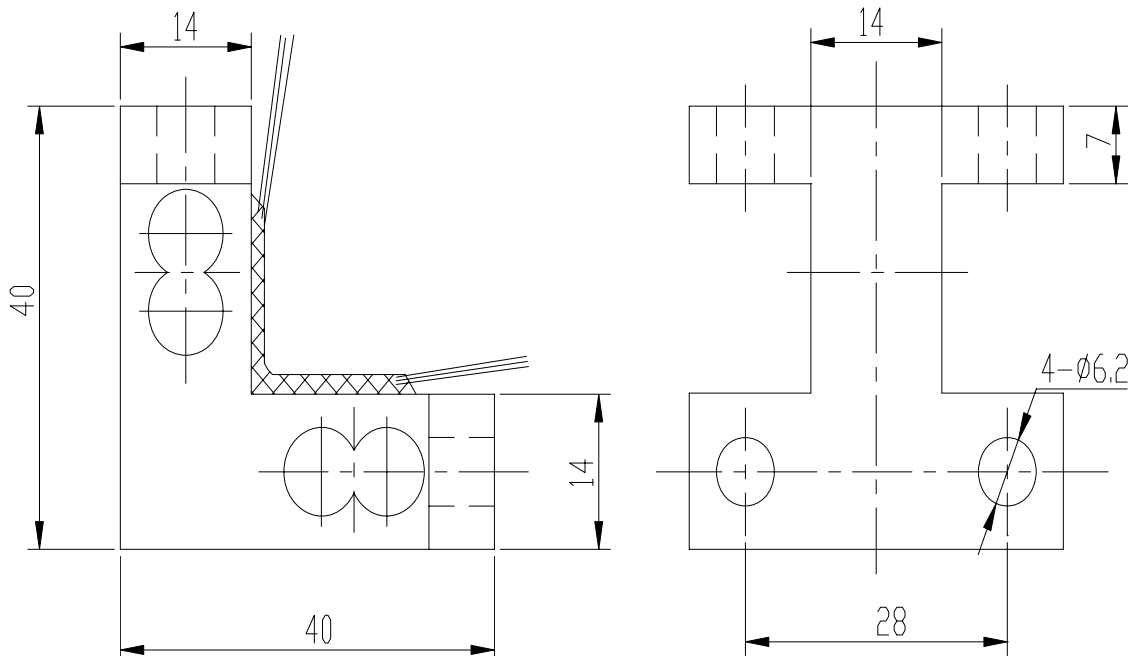
QF -82 load cells are available in the capacities of 200kg.  
Aluminum construction with parallel beam type.  
Silicon adhesive sealed, surface anodized and anti-corrosion.  
Integral structure and easy installation.  
Suitable for electronic counting scales, platform scales etc.



### Features:

Capacity : 200kg  
Defend grade: IP65  
High accuracy.  
Aluminum parallel beam  
Max. platform size:200x200mm  
Integral installation, Low profile and nice exterior..

### Electrical connection and Dimensions:



**Technical Specifications**

<b>Specifications:</b>		
capacity	kg	200,
safe overload	%FS	120
ultimate overload	%FS	150
rated output	mV/V	1.0 ± 0.1
excitation voltage	Vdc	9 ~ 12
combined error	%FS	± 0.1
zero unbalance	%FS	± 1.5
non-linearity	%FS	± 0.1
hysteresis	%FS	± 0.1
repeatability	%FS	± 0.05
creep	%FS/30min	± 0.05
input resistance	Ω	1050 ± 10
output resistance	Ω	100 ± 5
insulation resistance	M Ω	≥ 5000 @ 50 Vdc
operating temperature range	°C	-20 ~ +60
compensated temperature range	°C	-10 ~ +40
temperature coefficient of SPAN	%FS/10°C	± 0.03
temperature coefficient of ZERO	%FS/10°C	± 0.05

**Electrical connection:**

Excitation+ red    Excitation- black    Signal+ green    Signal- white

Four-core shielded cable with polyethylene. Cable is not connected with elastomer.

Cable length: 0.2 m

Cable diameter : 0.8 mm

The cable length could be chose by customer's application.